

November 2022



The entire Layher Event System is based on the proven Allround Scaffolding construction kit.



SO THAT ALL SPECTATORS GET THEIR MONEY'S WORTH

LAYHER EVENT STANDS

Standing or sitting, for 100 visitors or 10,000, on ground with or without slope – stands from Layher guarantee applause every time.

The entire Layher Event System is based on the proven Allround Scaffolding construction kit. It is used to adapt to the terrain and to build the supporting structure for the stand. Typical stand parts needed are stand elements (for generating the actual stepped design of the stand), matching guardrails and intermediate steps, and the components for seating (see Fig. 1).

Depending on the type of use, the stand can be equipped with individual chairs, benches, bucket seats or folding seats provided by others (see Fig. 2), depending on the selected depth of the rows.

For stands of the EV86 series, steel decks can also be used as an alternative to the Layher Event decks. Using the steel decks is attractive, due to their sturdiness during particularly long periods of service for stand structures used outdoors and also due to their slip resistance when the stand is used in winter (see Fig. 3).



Fig. 1

Stand elements with matching guardrails



Fig. 2

Stand elements with various seating options

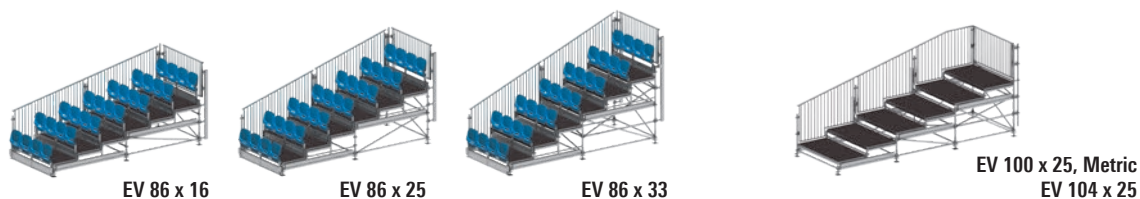


Fig. 3

Stand elements with steel decks

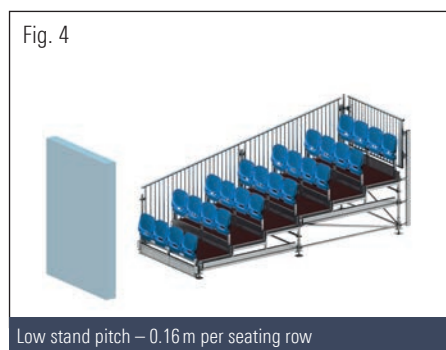
PRODUCT DETAILS

A principal feature of stands is their slope, or pitch. Pitch describes the height difference between the adjacent seating rows. The optimum pitch is selected depending on local conditions and on the type of event.

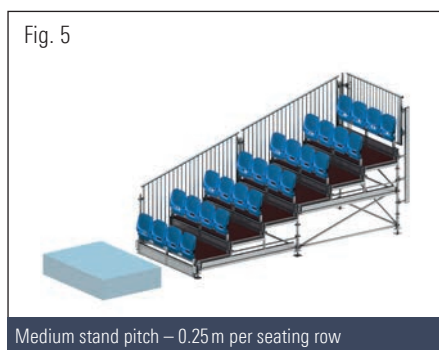


| Seated stand | EV 86 x 16 | EV 86 x 25 | EV 86 x 33 | EV 100 x 25 Metric | EV 104 x 25 |
|-----------------------|-------------|-------------|-------------|--------------------|-------------|
| Step width | 0.857 m | 0.857 m | 0.857 m | 1.00 m | 1.036 m |
| Step height | 0.166 m | 0.25 m | 0.333 m | 0.25 m | 0.25 m |
| Pitch angle [degrees] | 11.1 ° | 16.3 ° | 21.2 ° | 14.0 ° | 13.6 ° |
| Pitch angle [%] | 19.4% | 29.2% | 38.9% | 25.0% | 24.1% |
| Standard dimensions | 2.57x2.07 m | 2.57x2.07 m | 2.57x2.07 m | 2.00x2.00 m | 2.07x2.07 m |
| Non-fixed seating | possible | possible | possible | recommended | recommended |
| Fixed seating | recommended | recommended | recommended | possible | possible |

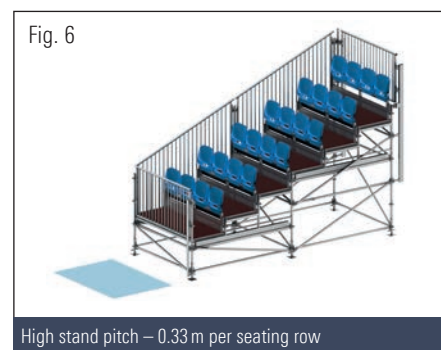
STANDARD DIMENSIONS AND RESULTANT PITCHES:



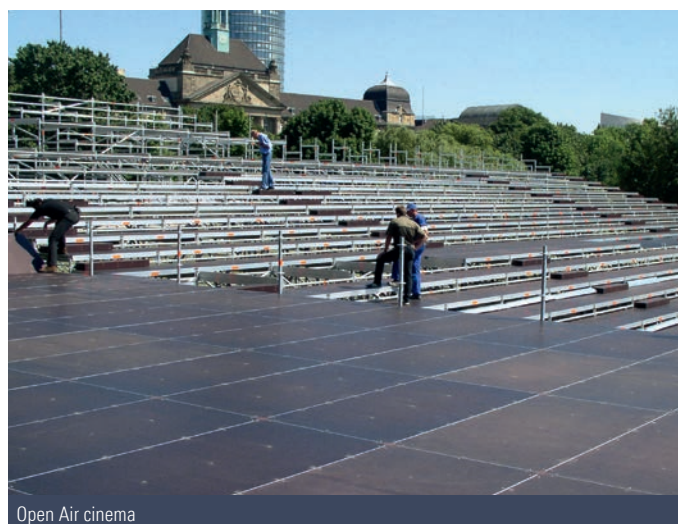
The low stand pitch is preferably used in conjunction with screens or in marquees. The guest looks straight ahead during screenings of presentations. This means that the heads of the people in the row in front do not impede the view onto the screen. If the stand is put up inside a marquee, the total height of the stand is adjusted to the dimensions of the marquee (see Fig. 4).



A medium stand pitch has a very wide range of uses. It offers the right balance between the structural height of the stand and the field of vision of the visitor (see Fig. 5).



For sporting events, high stand pitches have proven their worth, permitting an unobstructed view of what's happening, even when an appropriate initial height is required for the bottom row of seating (see Fig. 6).



A combination of flat and stepped areas in the Layher stands is possible without any problem (see photo left).

THE BENEFITS FOR YOU:

- ▶ **Standard solutions**
Standard material, economical and complete solutions from a single source, very rapid availability, verified safety.
- ▶ **Substructure with Allround Scaffolding**
High load-bearing capacity, rapid assembly and dismantling, flexible construction, choice of equipment.
- ▶ **Handy individual parts**
Easy to transport and store, palettisable.
- ▶ **Special structures**
For individual requirements.

APPLAUSE, APPLAUSE ...



Event System stand with tip-up seats



Tip-up seats



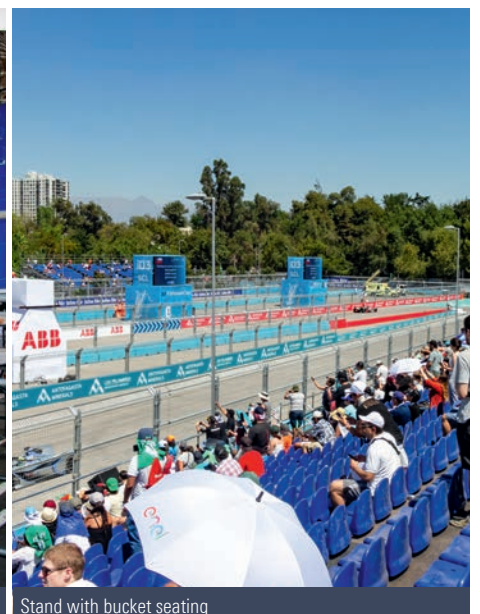
Terrace stand



Event System stand with bench seating for beach volleyball championship



Seated stand with bucket seating



Stand with bucket seating

PERMANENT OR TEMPORARY, SUMMER OR WINTER



Temporary beach volleyball stadium, with themed tarpaulins around Allround Scaffolding and Event System stands

Stand with Keder Roof XL



Temporary concert hall with stand



Stage and stand made of standard Allround components and Event System



Event System stand with bucket seating



Allround Scaffolding and Event System stand

Subject to technical modification. Component weights are subject to fluctuations due to tolerances and may therefore diverge from what is specified. Deliveries shall be made exclusively in accordance with our currently valid General Terms of Sale. Some of the scaffolding structures shown may still be undergoing assembly.