




POHL



Aluminum solutions for metal cladding

THE STATEMENT OF YOUR BUILDING



Ragon Institute · Cambridge · USA | © Robert Benson

Exclusive metal panel solutions for impressive architecture.

POHL specializes in engineering and fabrication of bespoke metal panel solutions with various materials and surfaces. Our forte is the creation of unique and complex metal cladding for exterior and interior applications of a building. Regardless of shape, color, or material, we embrace every challenge to transform your building into a landmark that captivates and leaves a lasting impression on its viewers.

With extensive experience and expertise in the industry, we collaborate with renowned architectural firms across the globe. Commitment to quality is paramount to us – it ensures that every project we undertake is tailored to meet its specific needs with utmost precision.

Guiding you from the initial stages of development and design through to the final phases of manufacturing, we provide comprehensive support throughout the entirety of your project. With craftsmanship and dedication to quality, we transform architectural visions into **THE STATEMENT OF YOUR BUILDING.**

Transportation Hub · NYC · USA | © Valéry Kloubert

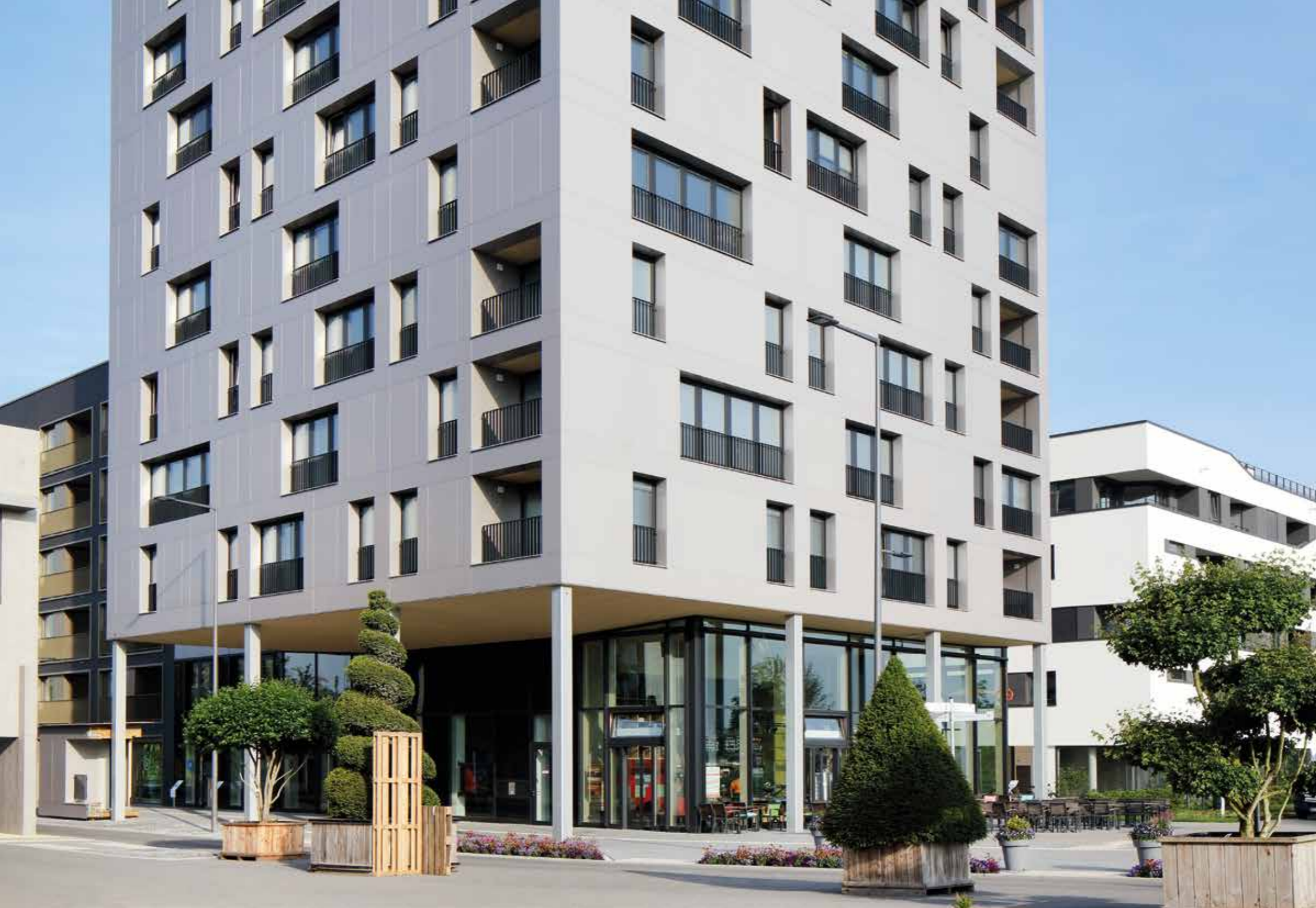


Lightweight, versatile, and sustainable.

Aluminum is an ideal material for facade cladding due to its lightweight nature. Its low weight makes it easy to install, particularly for high-rise buildings and large metal formats, while meeting high physical building standards. Another key advantage: aluminum is classified as Fire Class A1, non-combustible.

When it comes to design, aluminum has much to offer. It allows for sleek, elegant structures without compromising stability. Due to its excellent formability, aluminum facilitates versatile design solutions, from minimalist concepts to complex shapes.





Aluminum is 100% recyclable, making it an excellent choice for creating modern, eco-friendly urban spaces. Its minimal environmental impact aligns with the growing focus on sustainable building practices, supporting the creation of energy-efficient structures that meet both functional and aesthetic demands.

POHL DURANIZE

Anodizing creates durable, aesthetic surfaces.

With POHL Duranize, the top layer of aluminum is anodized, creating an extremely hard, scratch-resistant, and durable surface that requires minimal maintenance. Anodized aluminum is 100% recyclable, contributing significantly to the building's sustainability.

Available in a huge range of standard and custom colors.

30 St Mary Axe · London · UK | © Hufton+Crow





POHL DURANIZE BRONZE VIBRATION



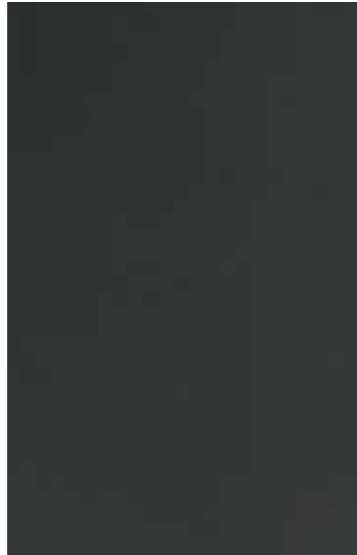
POHL DURANIZE RED MEDIUM



POHL DURANIZE CHAMPAGNE



POHL DURANIZE OLD COPPER



POHL DURANIZE DARK GREY



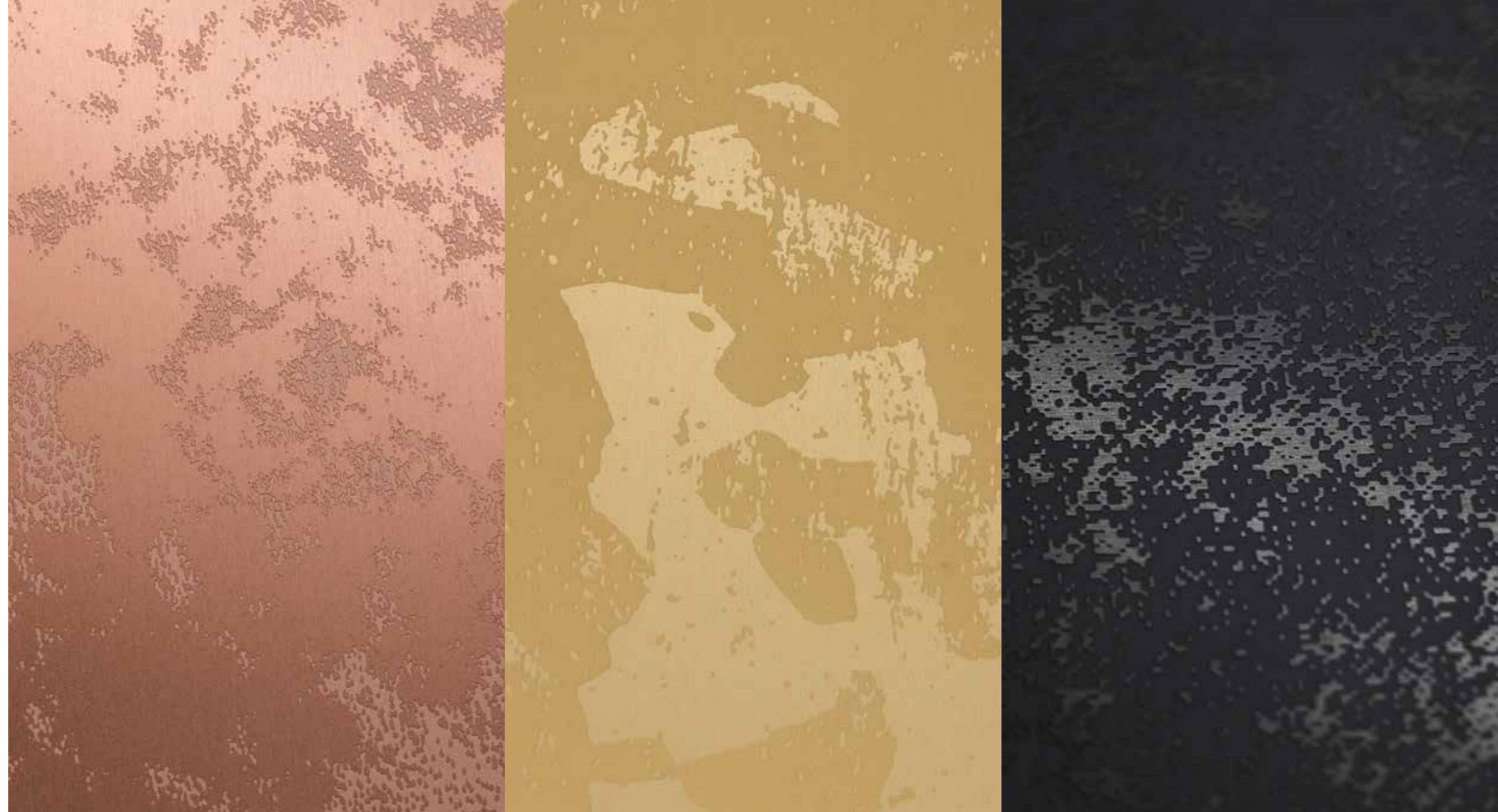
POHL DURANIZE BRIGHT SPARKLE SILVER



3 Broadgate - London - UK | © Zetovia

POHL DURANIZE Bicolor

POHL Duranize Bicolor is based on the use of two or more anodized layers. By combining different colors, matt or glossy effects, and eye-catching patterns and designs, the surface can be customized, giving it an unmistakable and unique look.



ALL EXAMPLES OF POHL DURANIZE BICOLOR SURFACES

POHL DURACOAT

Powder-coated solutions for unique surfaces.

POHL Duracoat is a high-quality 2-component powder coating specifically designed to optimally protect aluminum from corrosion and wear.

Aluminum can be powder-coated in any standard RAL color. To resemble the appearance of materials such as terracotta, tiles, or weathering steel, POHL has developed a range of Duracoat finishes that provide a distinctive look while preserving all the benefits of aluminum.



POHL Tile

POHL Cotto

POHL Ten

POHL Patina Green

Ithra Library · Dhahran · Saudi-Arabia | © Ivan Brodey





BOTH EXAMPLES OF POHL TILE SURFACES

Volpe National Transportation Systems Center - Cambridge - USA | © Dave Burk, SOM

POHL DURACOAT

POHL Tile

POHL Tile is the ideal alternative to stone facades, offering a solution that is significantly lighter, more durable, and more malleable, yet remarkably similar in appearance to real stone.

POHL DURACOAT

POHL Cotto

Powder-coated aluminum in natural earth tones reminiscent of terracotta.

POHL Ten

Powder-coated aluminum with a weathered corten steel look.

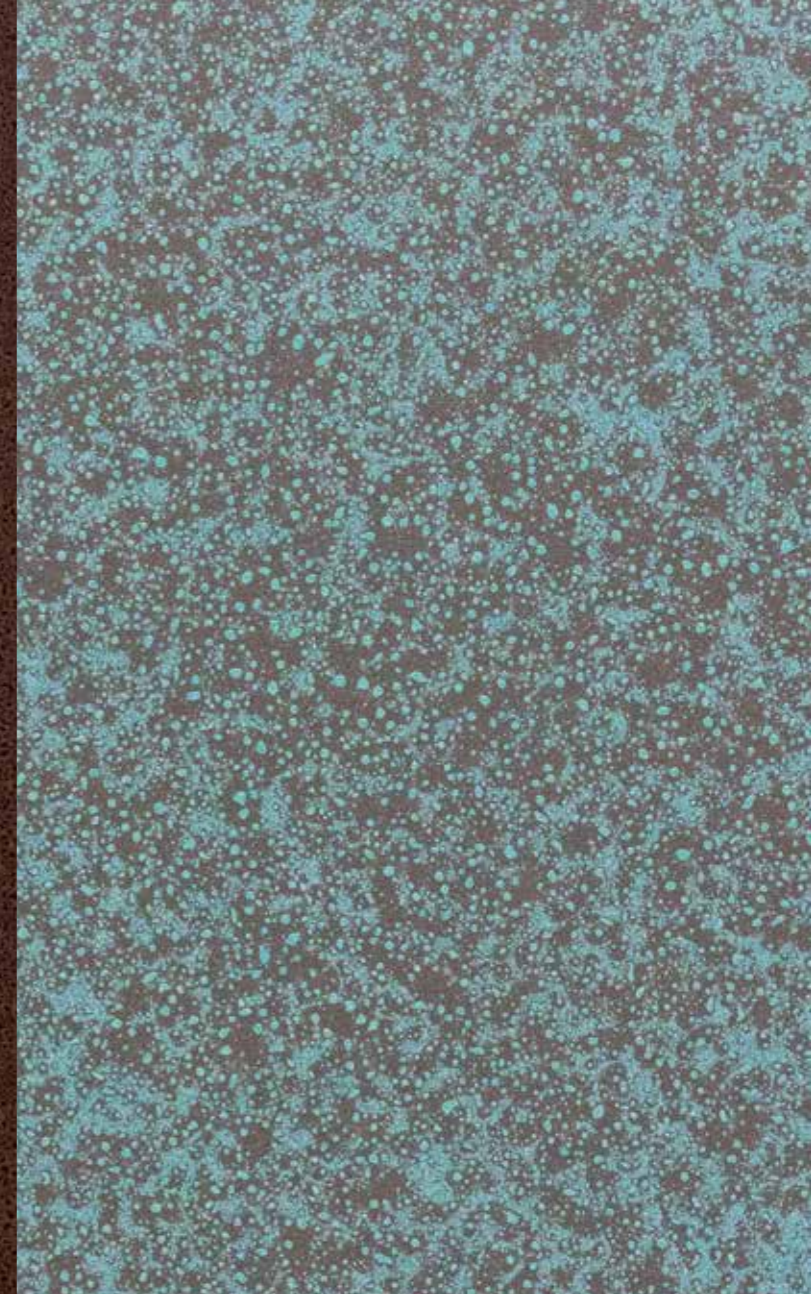
POHL Patina Green

A solution that authentically recreates the green patina of naturally aged and oxidized copper.

POHL COTTO

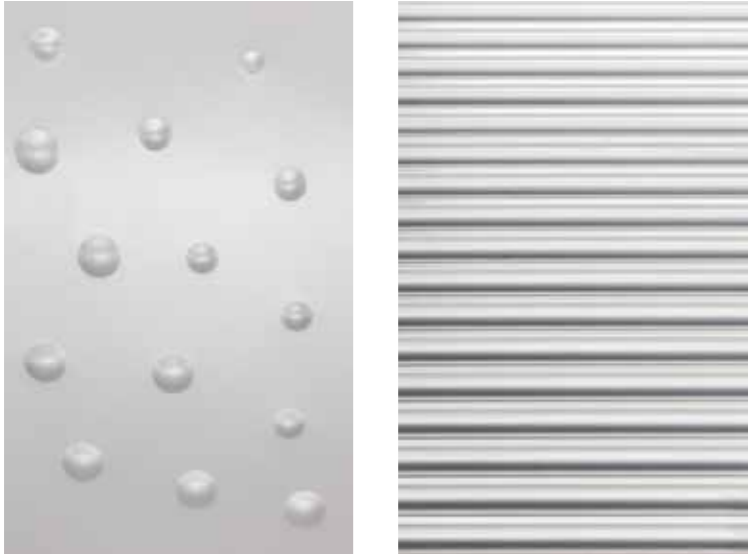
POHL TEN

POHL PATINA GREEN



Embossing

Embossings can enhance both the visual appeal and rigidity of a metal facade, providing greater stability and structural strength. Coarse, graphic edges or fine patterns are easily integrated due to the material's excellent formability.



BOTH EXAMPLES OF CUSTOMIZED EMBOSSINGS

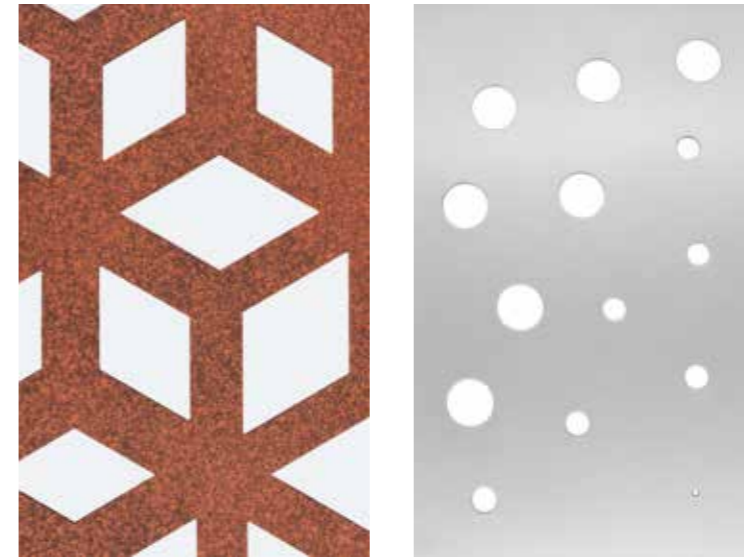


The Wharf · Washington DC · USA | © Ulf Wallin



Perforation

Perforated aluminum panels are an excellent way to create a distinctive look and add a unique touch to a facade. With the ability to incorporate almost any pattern, they offer a high degree of design freedom. Additionally, they serve as effective sunshades, allowing ample light into the building while helping to regulate interior temperatures.



BOTH EXAMPLES OF CUSTOMIZED PERFORATIONS

Brushed surfaces and high gloss polish

From subtle satin finishes to intricate textures and stunning mirror-like polishes – brushed or polished aluminum panels enhance spaces with their dynamic appearance. Their high reflectivity brightens structures and allows them to seamlessly blend with their surroundings, almost achieving a dematerialization effect when mirror-polished. These smooth transitions make them ideal for modern interiors and facade claddings.



STRAIGHT – DIRECTIONAL BRUSH WITH STRUCTURE



HIGH GLOSS MIRROR POLISH



VIBRATION – NON-DIRECTIONAL BRUSH WITH A DELICATE APPEARANCE



BEAD BLASTED – EVEN AND MATT SURFACE

Dorotheen Quartier - Stuttgart - Germany | © David Matthiessen



POHL

Front: King's Cross · London · UK | © Timothy Soar

POHL FACADE DIVISION

POHL Metal Systems GmbH
Robert-Bosch-Str. 6
50769 Cologne
Germany

Tel.: +49 221 70911-0

info@pohl-facades.com
www.pohl-facades.com

