


The logo for POHL, consisting of the word "POHL" in a bold, white, sans-serif font. The letter "O" is stylized with a white circle inside it. The logo is positioned in the upper right corner of the image.

POHL

A photograph of a building's interior or exterior featuring a complex metal cladding system. The cladding is made of bronze and copper, with a grid of dark lines forming a geometric pattern. The surface is highly textured and reflective, showing intricate patterns of light and shadow. A bright light source is visible on the left side, creating a strong glow. A vertical metal rod is visible in the center of the image.

**Bronze and  
copper solutions  
for metal cladding**

▮ THE STATEMENT OF YOUR BUILDING





American Girl · NYC · USA | © POHL

## Exclusive metal panel solutions for impressive architecture.

POHL specializes in engineering and fabrication of bespoke metal panel solutions with various materials and surfaces. Our forte is the creation of unique and complex metal cladding for exterior and interior applications of a building. Regardless of shape, color, or material, we embrace every challenge to transform your building into a landmark that captivates and leaves a lasting impression on its viewers.



With extensive experience and expertise in the industry, we collaborate with renowned architectural firms across the globe. Commitment to quality is paramount to us – it ensures that every project we undertake is tailored to meet its specific needs with utmost precision.

Guiding you from the initial stages of development and design through to the final phases of manufacturing, we provide comprehensive support throughout the entirety of your project. With craftsmanship and dedication to quality, we transform architectural visions into **THE STATEMENT OF YOUR BUILDING.**



## Copper and its unique character.

Copper and its alloys have been integral to architecture for centuries and are still highly regarded in modern design. By using different alloys and combining post-processing and patination techniques, a wide range of design possibilities can be achieved with bronze, brass, and copper.

Over the years, each alloy develops an individual ageing behavior due to weathering. The composition of the alloy, material choice, as well as patination and finishing techniques, enable the creation of a uniform aging process and a consistent color appearance. We can artificially accelerate the aging process, leave the material untreated to allow natural oxidation, or seal its appearance with lacquer to preserve the original look. Regardless of the chosen approach, each sheet retains its unique character.





## POHL BRONZE

With POHL Bronze, we have created an exceptionally elegant surface that meets all demands for design, color, and durability. The color spectrum ranges from reddish to gold to brownish shades. The appearance is fundamentally influenced by the choice of alloy, finish, patination, and sealing.

POHL Bronze can be recycled repeatedly without any loss of quality and has a lifespan of over 100 years.



# POHL BRONZE

## Hairline

This finish creates a directional structure that gives a subtle, elegant look.



POHL BRONZE HAIRLINE DARK



POHL BRONZE HAIRLINE LIGHT



POHL BRONZE HAIRLINE NATURAL





# POHL BRONZE

## Vibration

This finish with its non-directional polish, creates a vibrant and exclusive look.



POHL BRONZE VIBRATION DARK

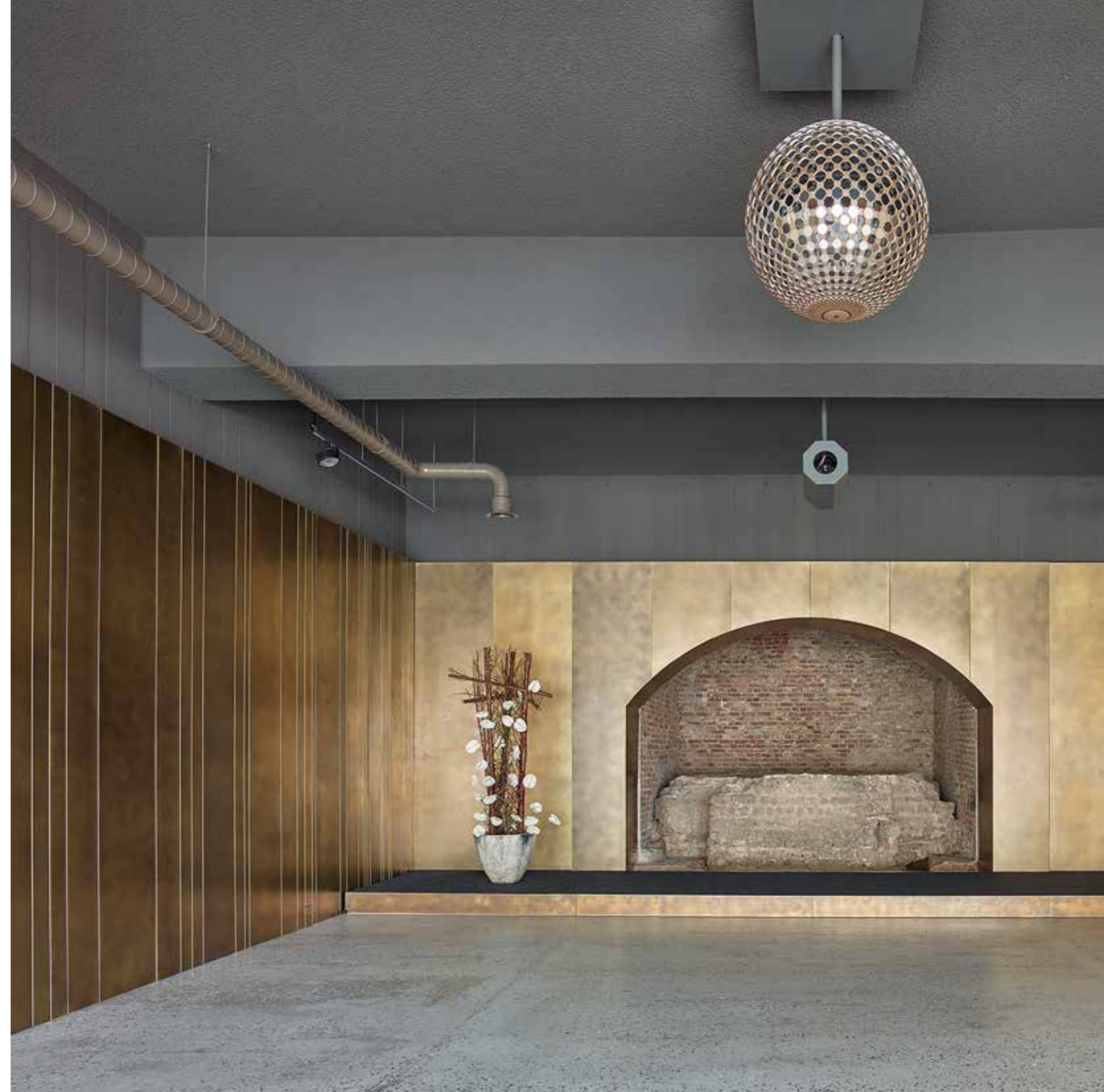


POHL BRONZE VIBRATION LIGHT



POHL BRONZE VIBRATION NATURAL

Baptisterium · Cologne · Germany | © Hohe Domkirche Köln · Dombauhütte Köln · Foto: Mira Unkelbach





Pier 17 · NYC · USA | © POHL

# POHL BRONZE

## Etched

Etched bronze surfaces are a perfect choice for adding a sophisticated, unique touch to a building. They offer a wide range of design possibilities, allowing for custom patterns and textures.



BOTH EXAMPLES OF POHL BRONZE ETCHED SURFACES



# POHL COPPER

Copper in architecture is valued for its timeless appeal, durability, and sustainability. Its distinctive patina and warm tones lend character to facade claddings and interior spaces, while it offers exceptional performance in terms of weather resistance and energy efficiency. It can be used raw, allowing for natural oxidation and the development of a green patina over time, or sealed with a clear lacquer to preserve its original copper shade.



POHL COPPER

Australian Embassy - Washington DC - USA | © Ron Blunt

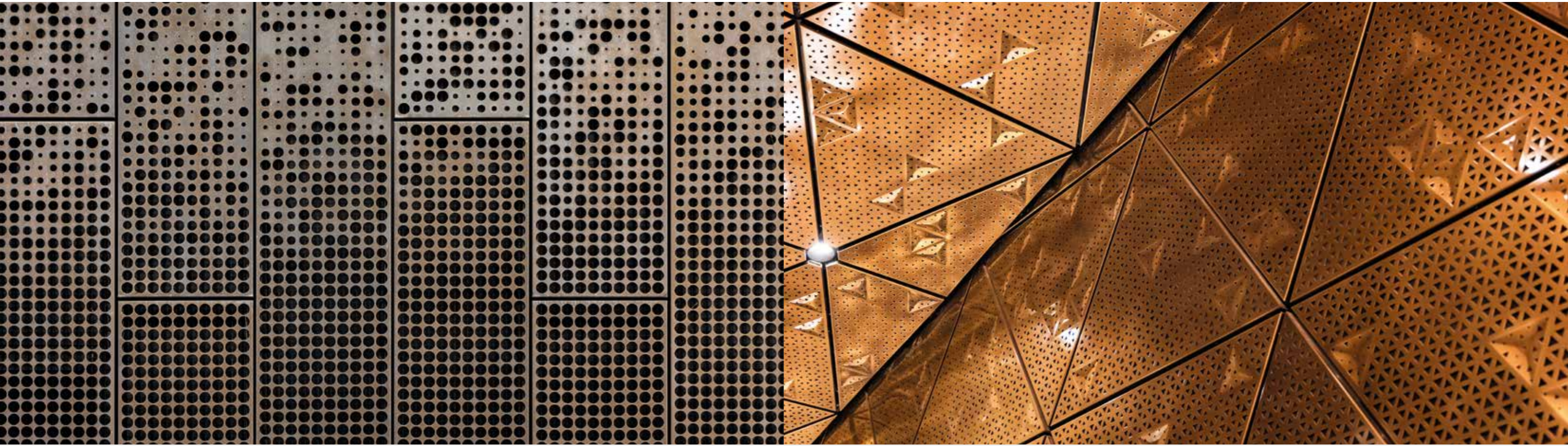




# Perforation and Embossing

Copper, in all its alloys, is not only highly malleable but also ideal for perforation and embossing. Both techniques, whether used individually or in combination, create dynamic

patterns and a striking architectural presence. Depending on the approach, very different results can be achieved, ranging from a rough, industrial look to a sophisticated, glossy finish.





# POHL

Front: The Mart · Chicago · USA | © Magda Biernat

## POHL FACADE DIVISION

POHL Metal Systems GmbH  
Robert-Bosch-Str. 6  
50769 Cologne  
Germany

Tel.: +49 221 70911-0

[info@pohl-facades.com](mailto:info@pohl-facades.com)  
[www.pohl-facades.com](http://www.pohl-facades.com)

